

FIGURE 22. A – *Arytainilla atlantica* sp. nov., B – *A. sulci*,  
C – *A. serpentina* sp. nov., D – *A. telonicola* sp. nov. Scale bars = 0.5 mm.

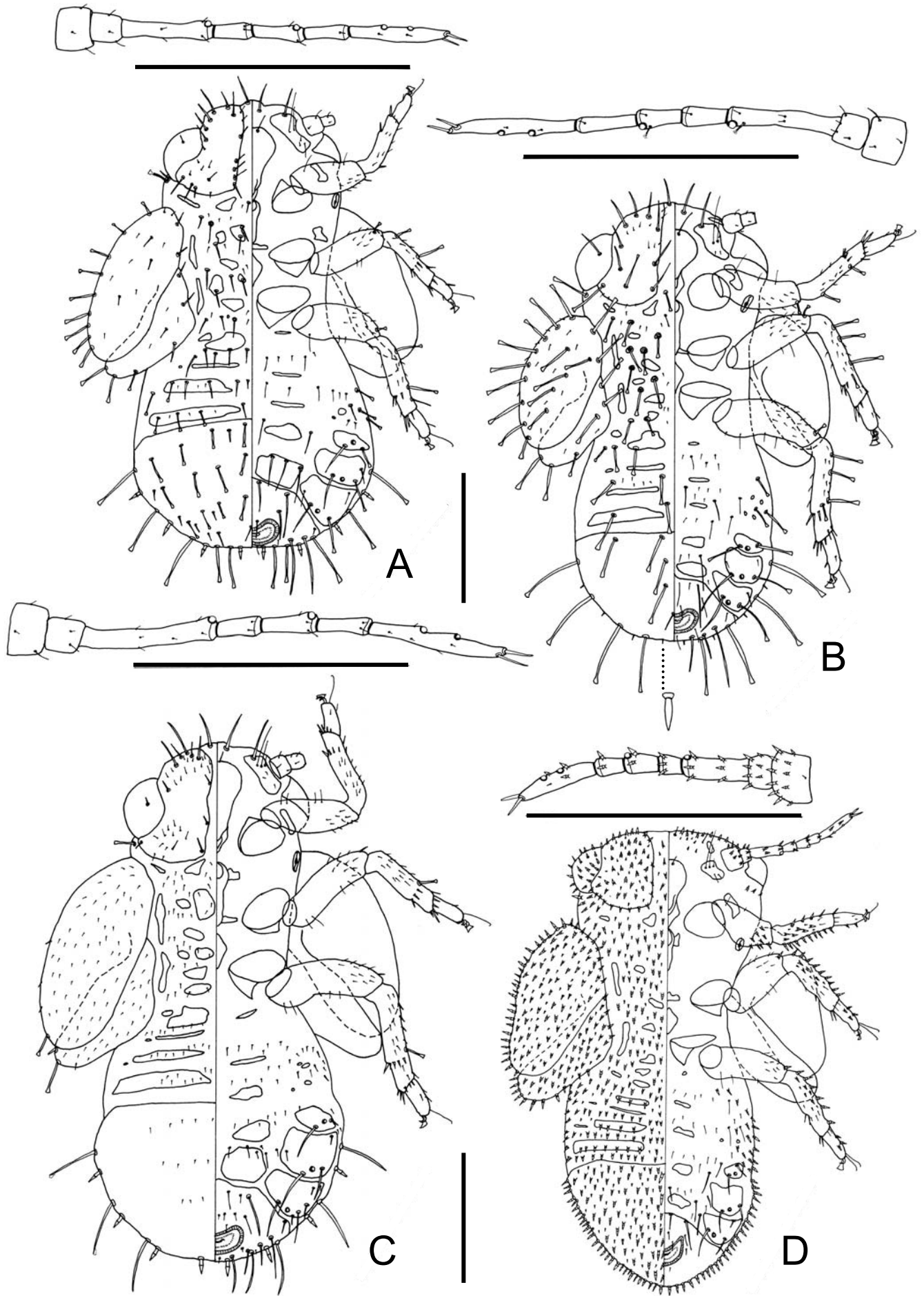


FIGURE 23. A – *Arytainilla gredi*, B – *A. montivaga* sp. nov.,  
C – *Livilla ima*, D – *Pseudacanthopsylla improvisa*. Scale bars = 0.5 mm.

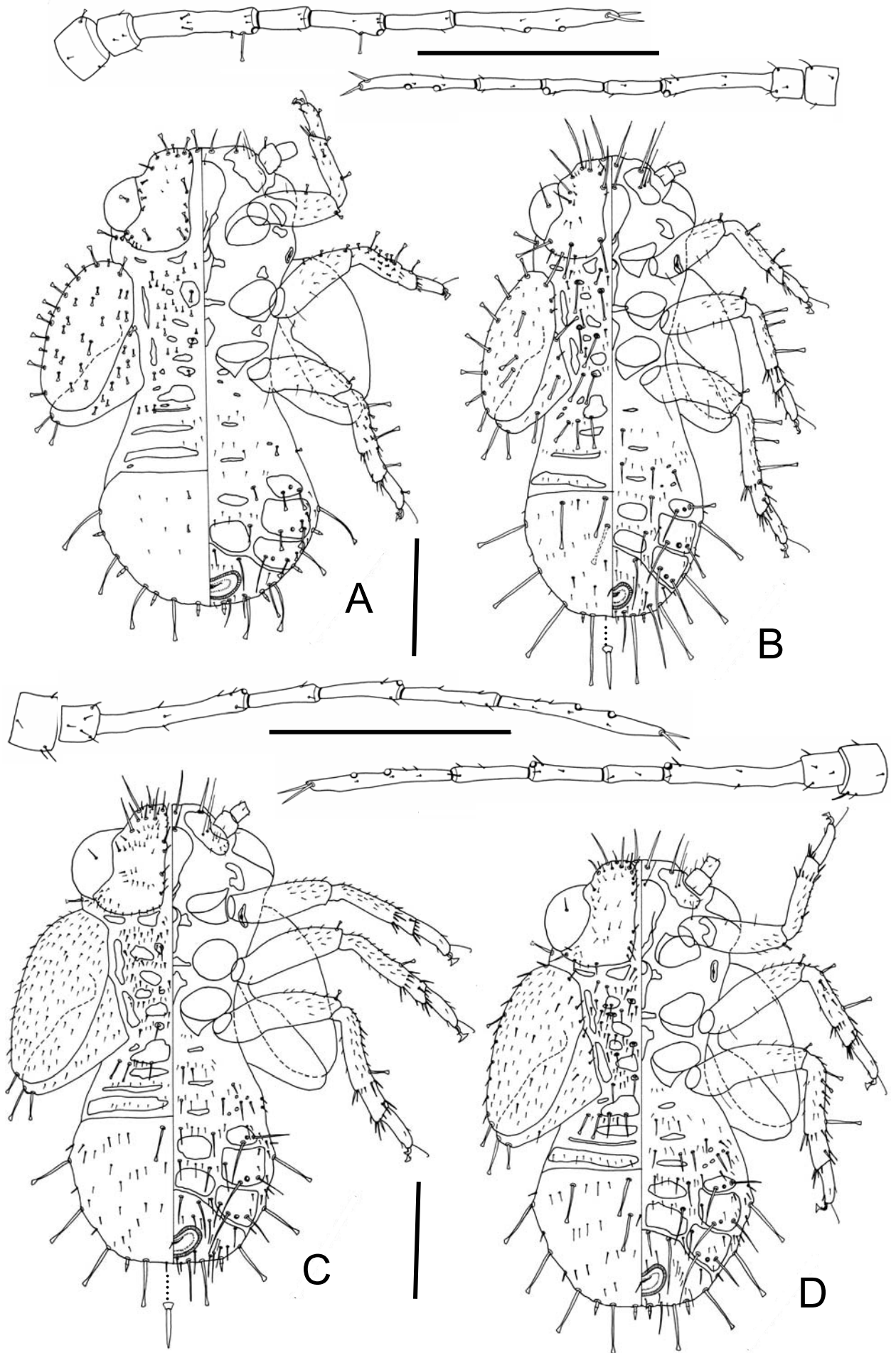


FIGURE 24. A – *Livilla monospermae*, B – *Arytaina devia* (Gran Canaria),  
C – *A. vittata* sp. nov., D – *A. nubivaga*. Scale bars = 0.5 mm.

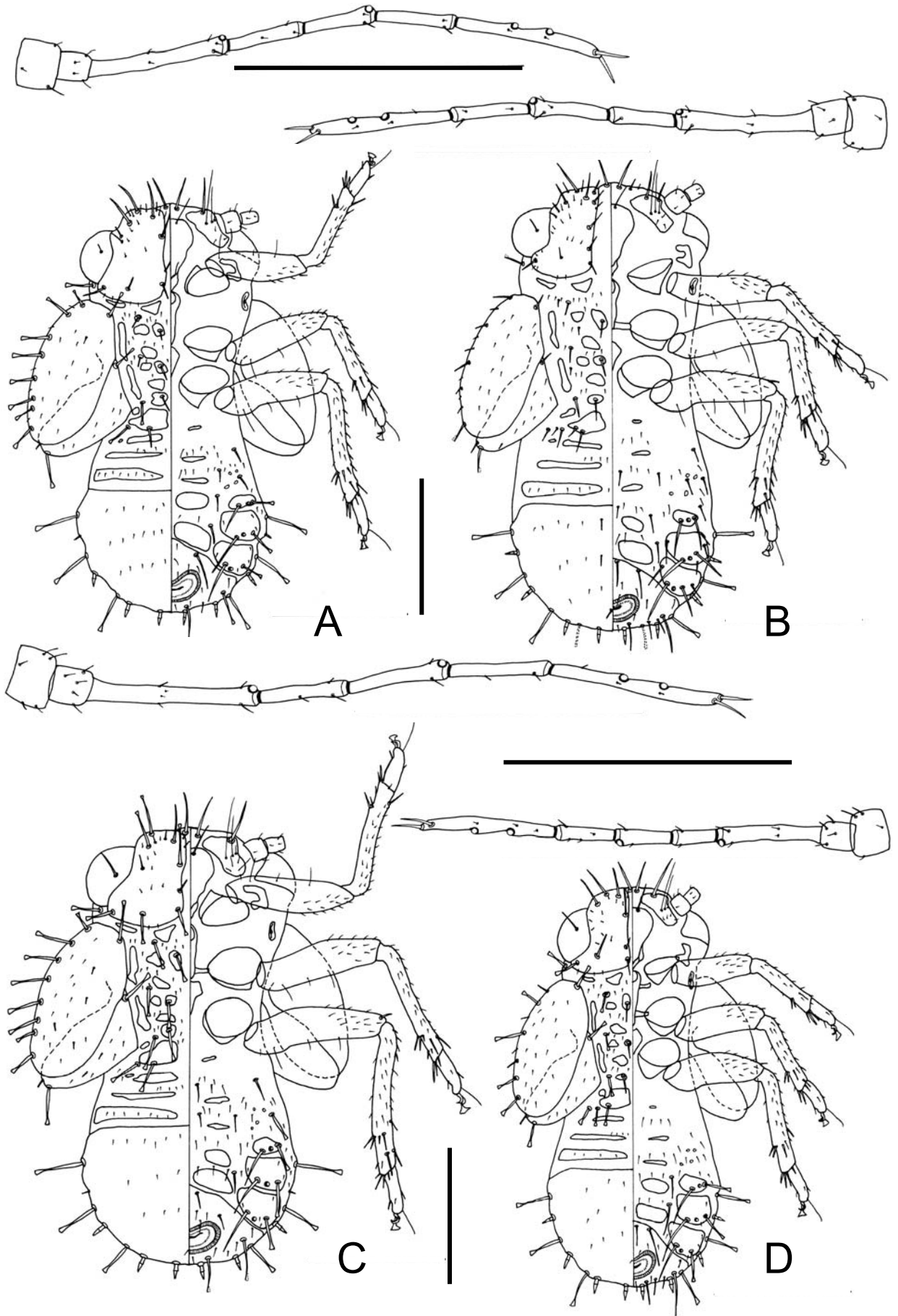


FIGURE 25. A – *Atytinnis umbonata*, B – *A. cognata*,  
C – *A. incuba*, D – *A. berber* sp. nov. Scale bars = 0.5 mm.

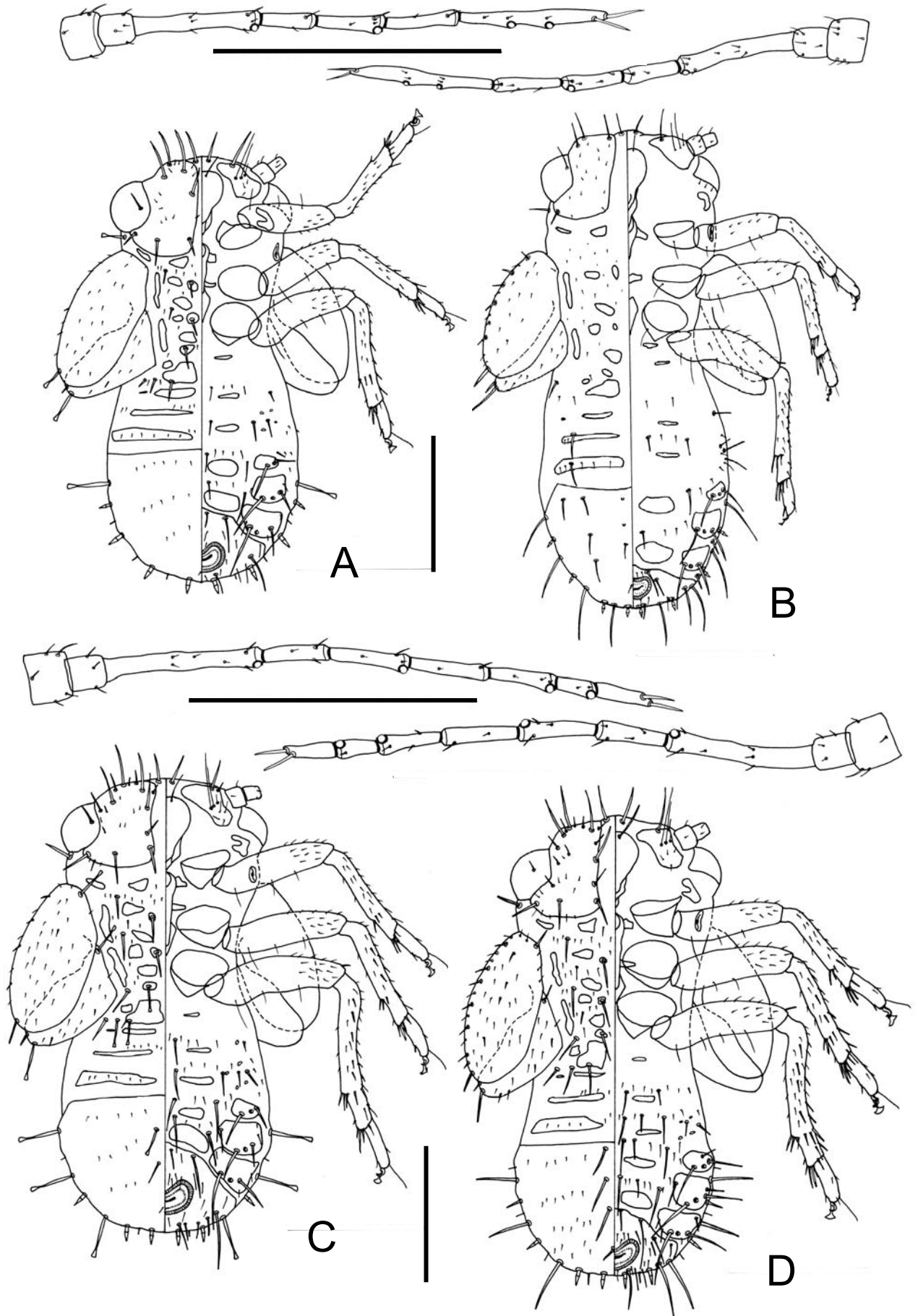


FIGURE 26. A – *Arytinnis prognata*, B – *A. diluta*;  
C – *A. nigralineata*, D – *A. proboscidea*. Scale bars = 0.5 mm.

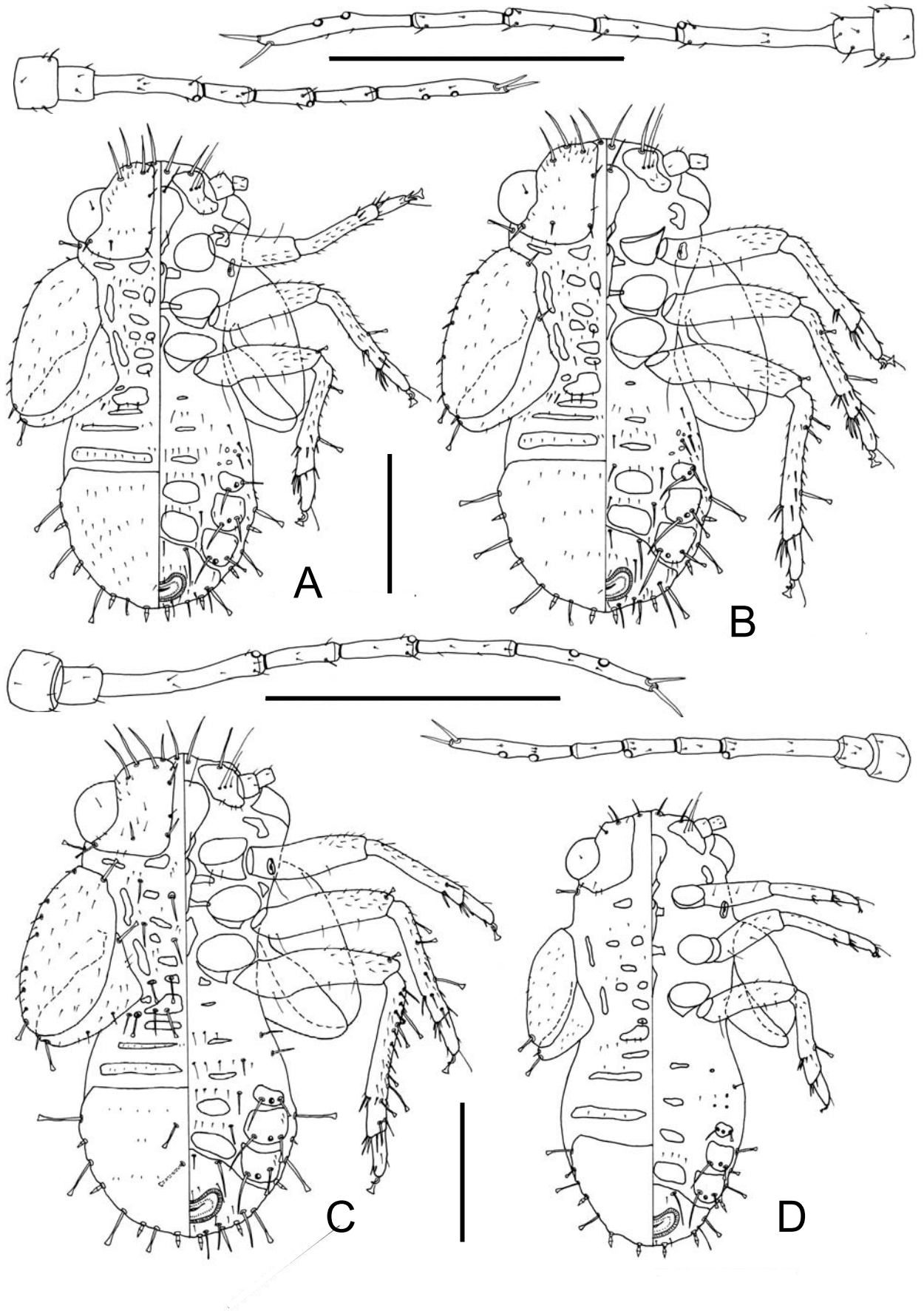


FIGURE 27. A – *Arytinnis hupalupa* sp. nov., B – *A. modica*,  
C – *A. dividens*, D – *A. ochrita* sp. nov. Scale bars = 0.5 mm.

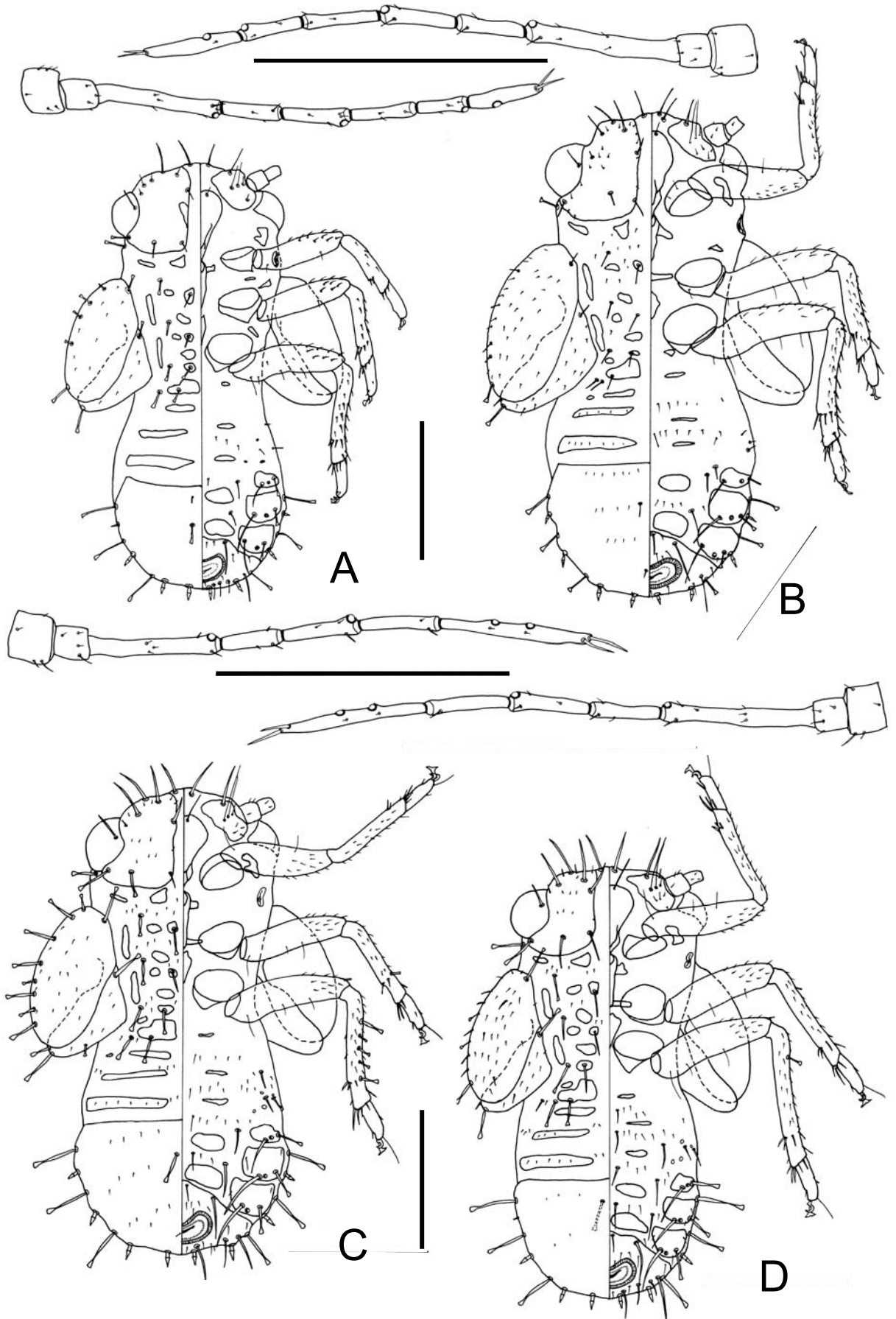


FIGURE 28. A – *Arytinnis gomeræ* sp. nov., B – *A. occidentalis* sp. nov.,  
C – *A. pileolata*, D – *A. equitans*. Scale bars = 0.5 mm.

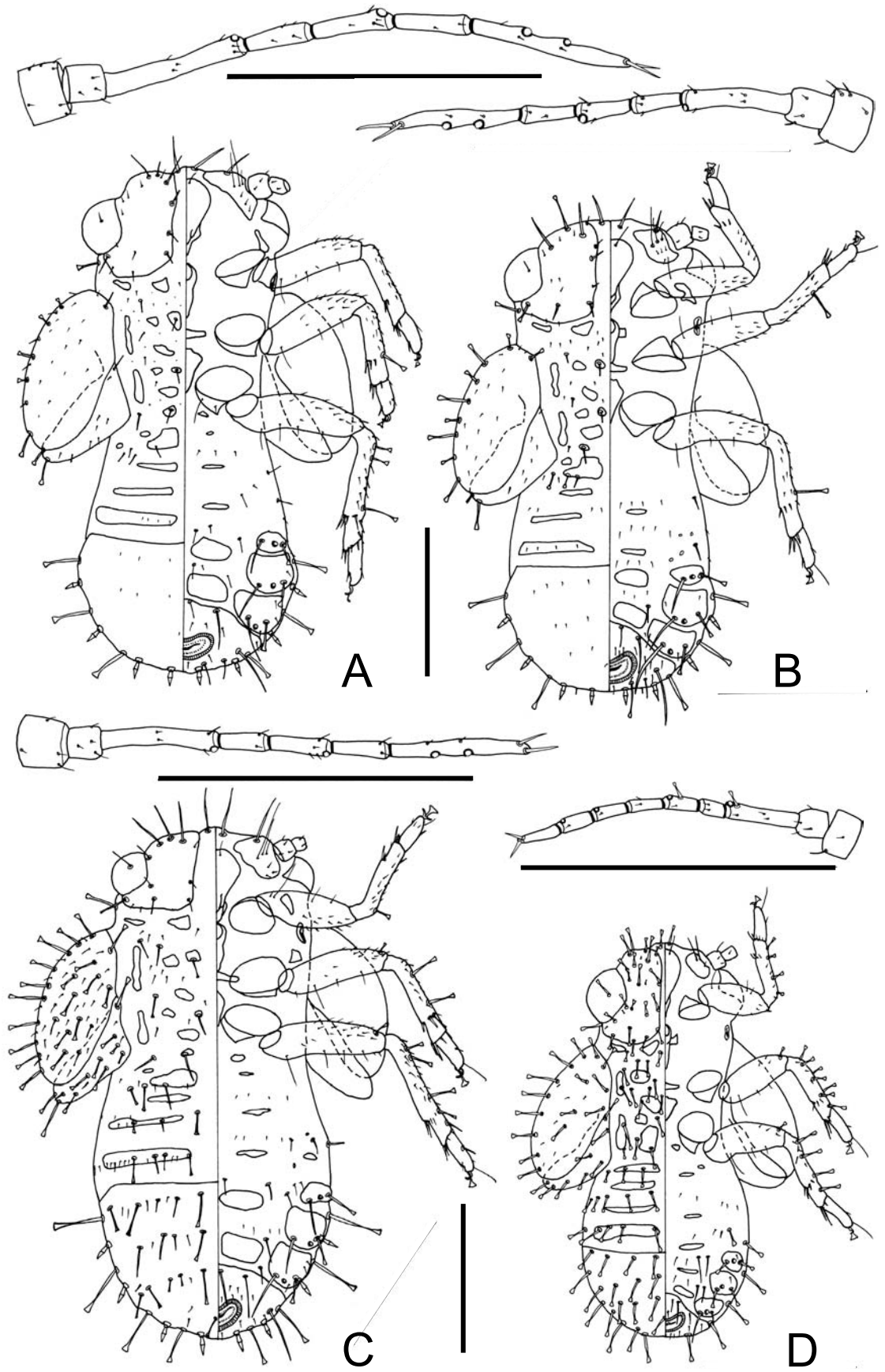


FIGURE 29. A – *Arytinnis fortunata* sp. nov., B – *A. romeria* sp. nov.,  
C – *A. menceyata* sp. nov., D – *Acizzia uncatoides*. Scale bars = 0.5 mm.

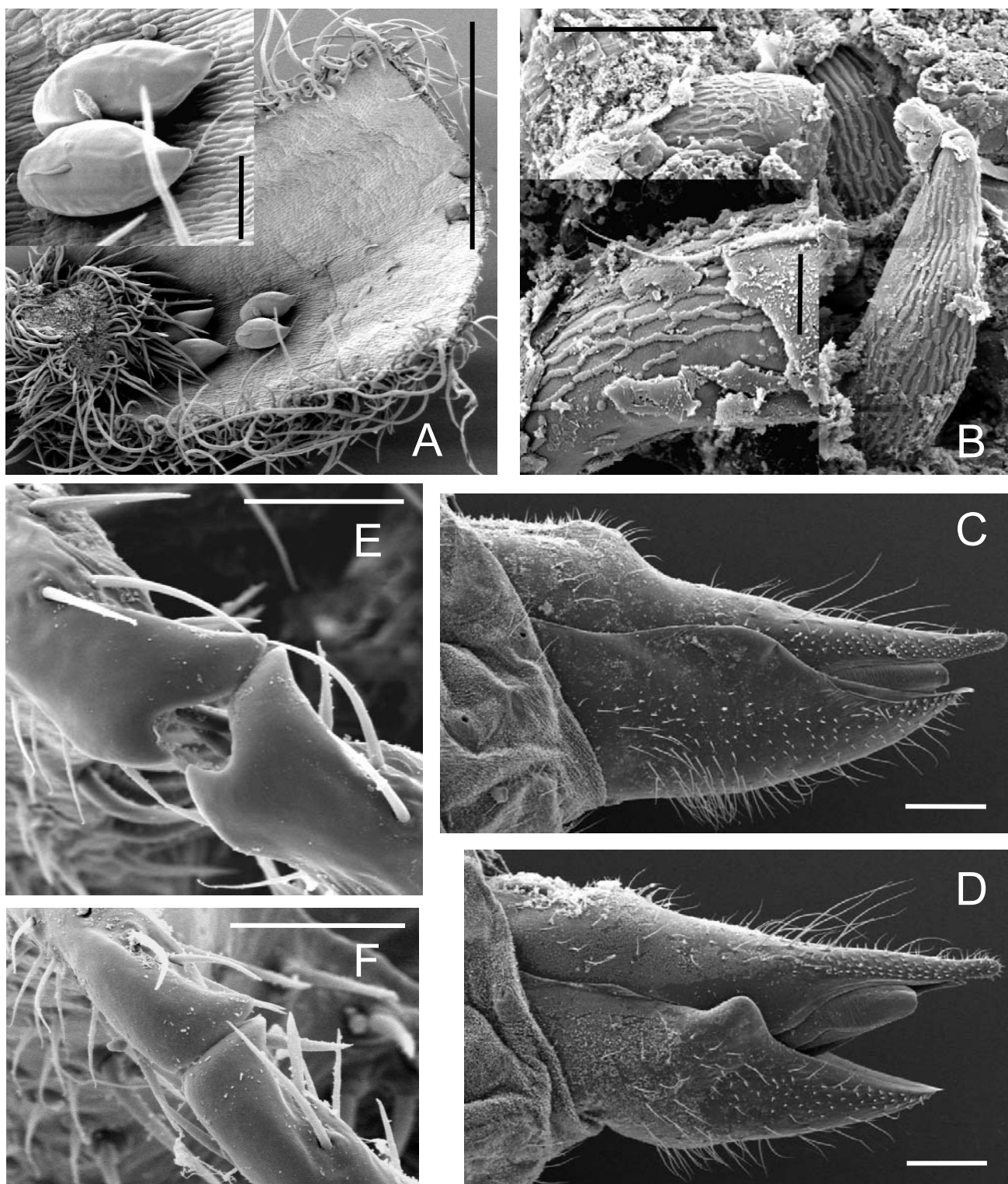


FIGURE 30. A – eggs of *Arytinnis nigrilineata* laid on the inner surface of the floral bracts of *Adenocarpus foliolosus* (scale bar = 1 mm, inset = 0.1 mm), B – eggs of *Pseudacanthopsylla improvisa* embedded in the abdomen, showing sculpturing in the chorion layer (scale bar = 0.1 mm, inset = 30  $\mu$ m), C–D E genitalia, C – *Arytinnis diluta*, D – *A. equitans* (scale bars = 0.1 mm), E–F  $\Gamma$  parameres in dorsal view, E – *Arytinnis occidentalis* sp. nov., F – *A. fortunata* sp. nov. (scale bars = 30  $\mu$ m).

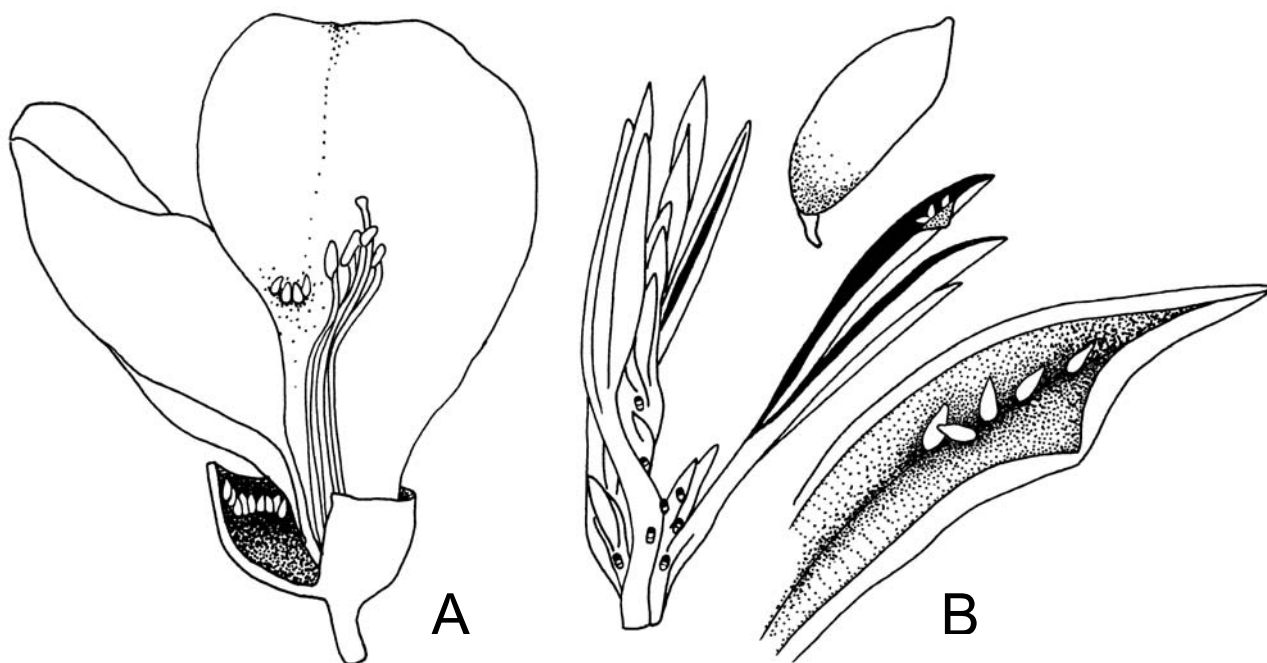


FIGURE 31. Egg placement, A – eggs of *Arytaina vittata* sp. nov. are laid around the inner rim of the calyx, and in small clusters on the corolla of *Spartocytisus filipes*, B – eggs of *Arytainilla dividens* are laid along the midrib, inside folded new leaves of *Chamaecytisus proliferus*, 1<sup>st</sup>-2<sup>nd</sup> instar nymphs then migrate down to feed on the leaf buds.