

FIGURE 3. *Arytainilla serpentina* sp. nov. A – forewing, B – head, C – proboscis and clypeus, D – antenna, E – Egenitalia and ovipositor, F – ♂ genitalia, G – ♂ paramere interior view, H – ♂ paramere posterior view, I – ♂ aedeagus. Scale bars: A = 1 mm, B–F = 0.5 mm, G–I = 0.1 mm.

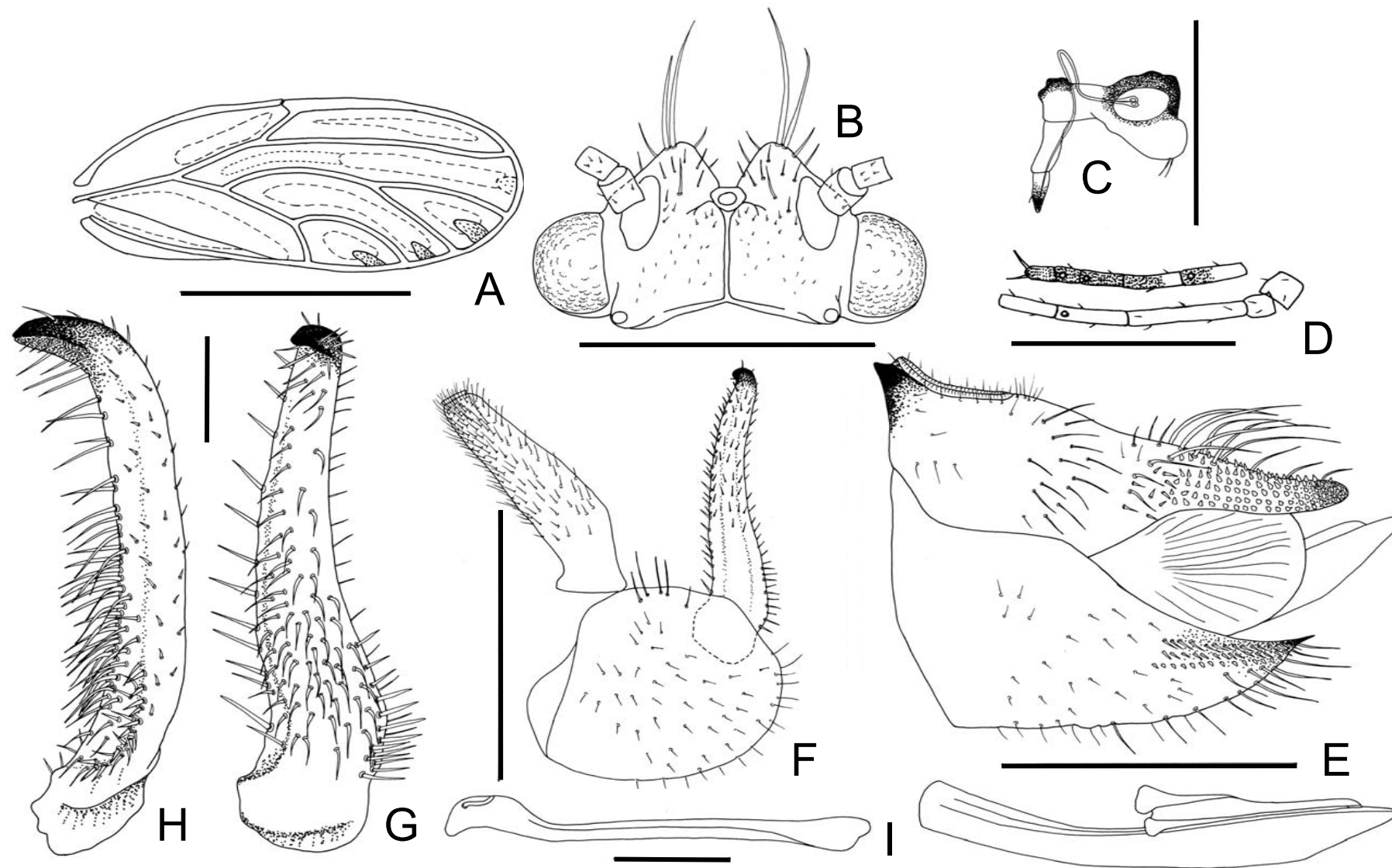


FIGURE 4. *Arytainilla atlantica* sp. nov. A – forewing, B – head, C – proboscis and clypeus, D – antenna, E – Egenitalia and ovipositor, F – Γ genitalia, G – Γ paramere interior view, H – Γ paramere posterior view, I – Γ aedeagus. Scale bars: A = 1 mm, B–F = 0.5 mm, G–I = 0.1 mm.

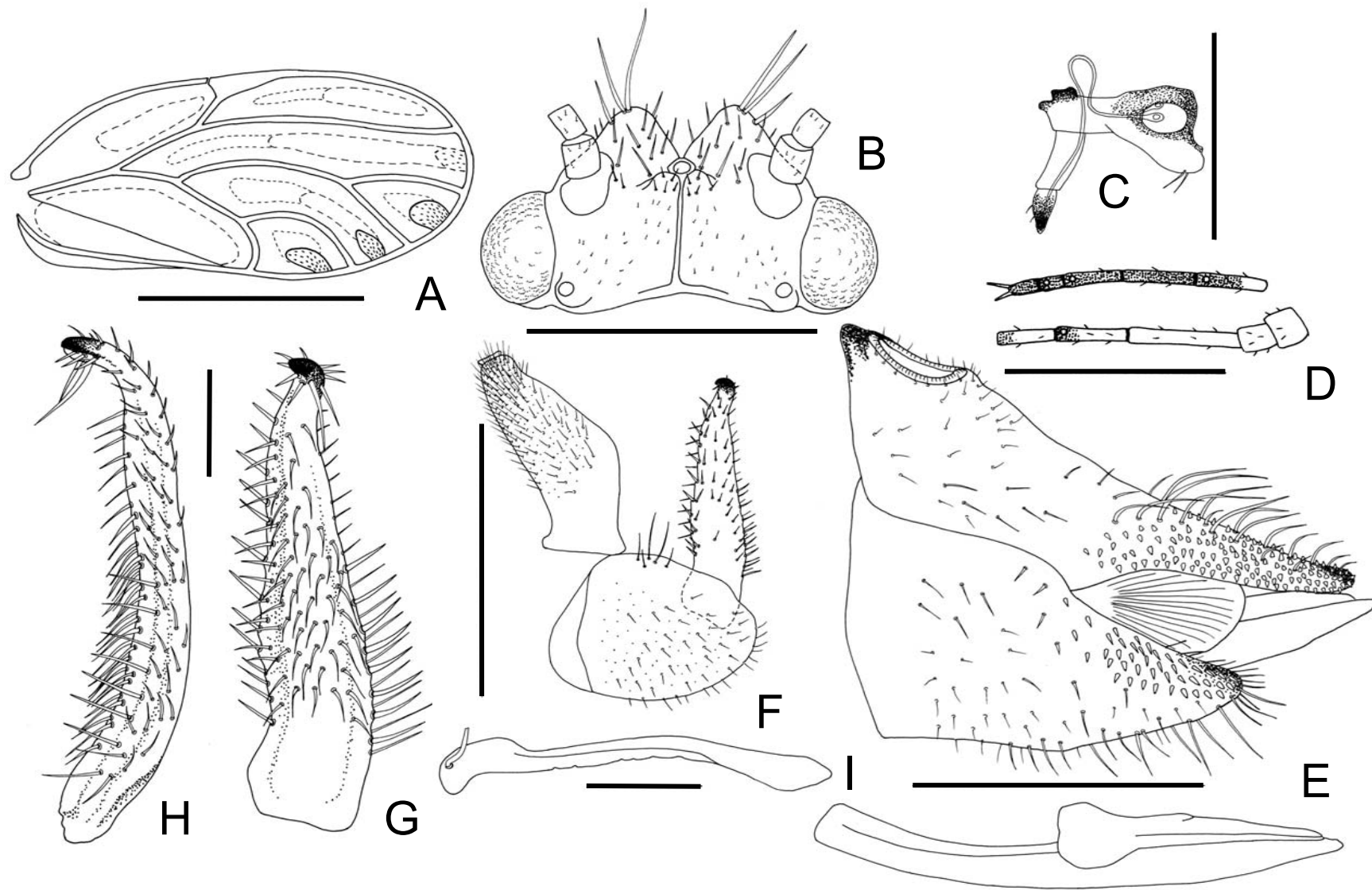


FIGURE 5. *Arytainilla telonicola* sp. nov. A – forewing, B – head, C – proboscis and clypeus, D – antenna, E – Egenitalia and ovipositor, F – Γ genitalia, G – Γ paramere interior view, H – Γ paramere posterior view, I – Γ aedeagus. Scale bars: A = 1 mm, B–F = 0.5 mm, G–I = 0.1 mm.

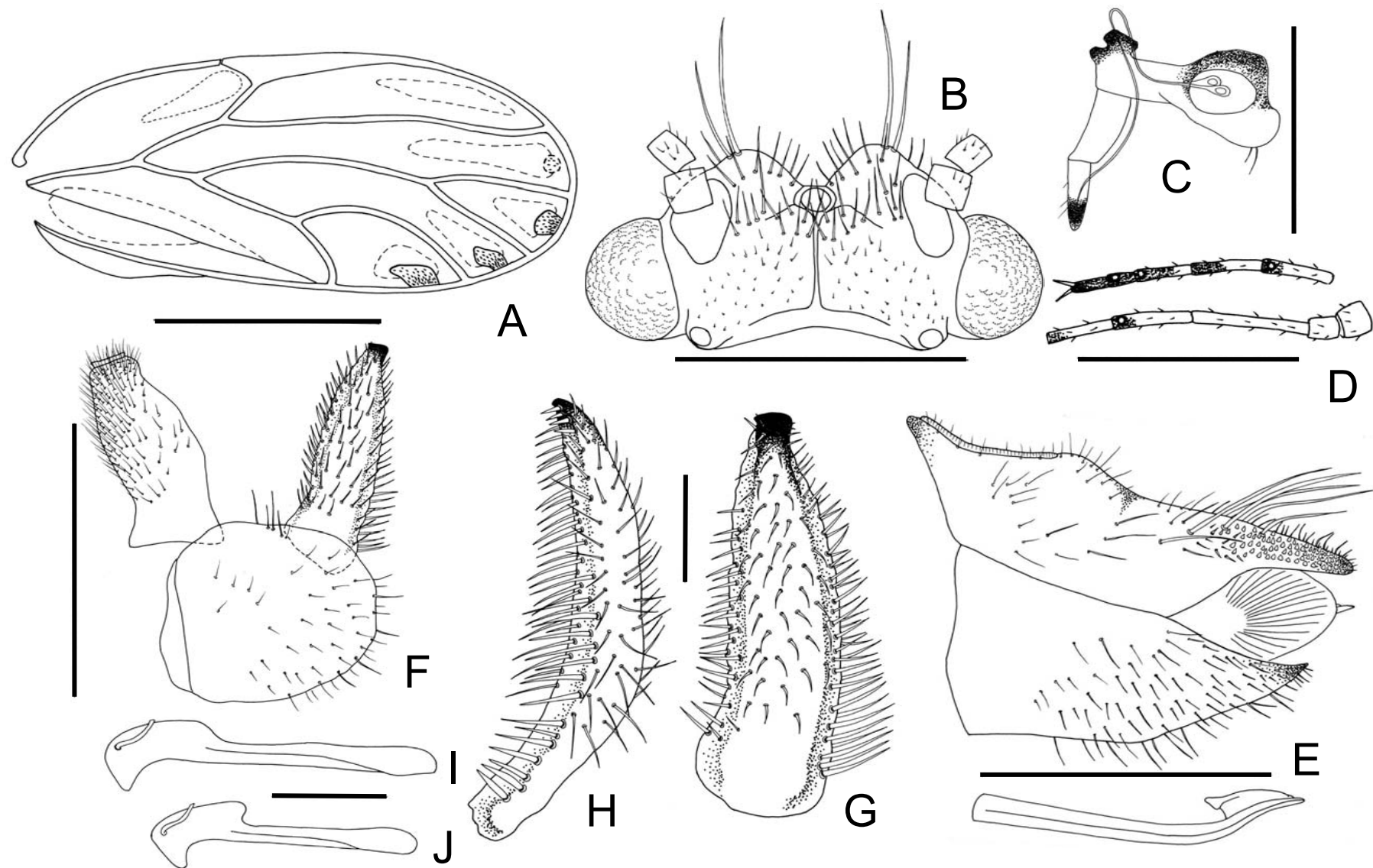


FIGURE 6. *Arytainilla montivaga* sp. nov. A – forewing, B – head, C – proboscis and clypeus, D – antenna, E – Egenitalia and ovipositor, F – Γ genitalia, G – Γ paramere interior view, H – Γ paramere posterior view, I – aedeagus Spanish populations, J – aedeagus Moroccan populations. Scale bars: A = 1 mm. B–F = 0.5 mm. G–I = 0.1 mm.

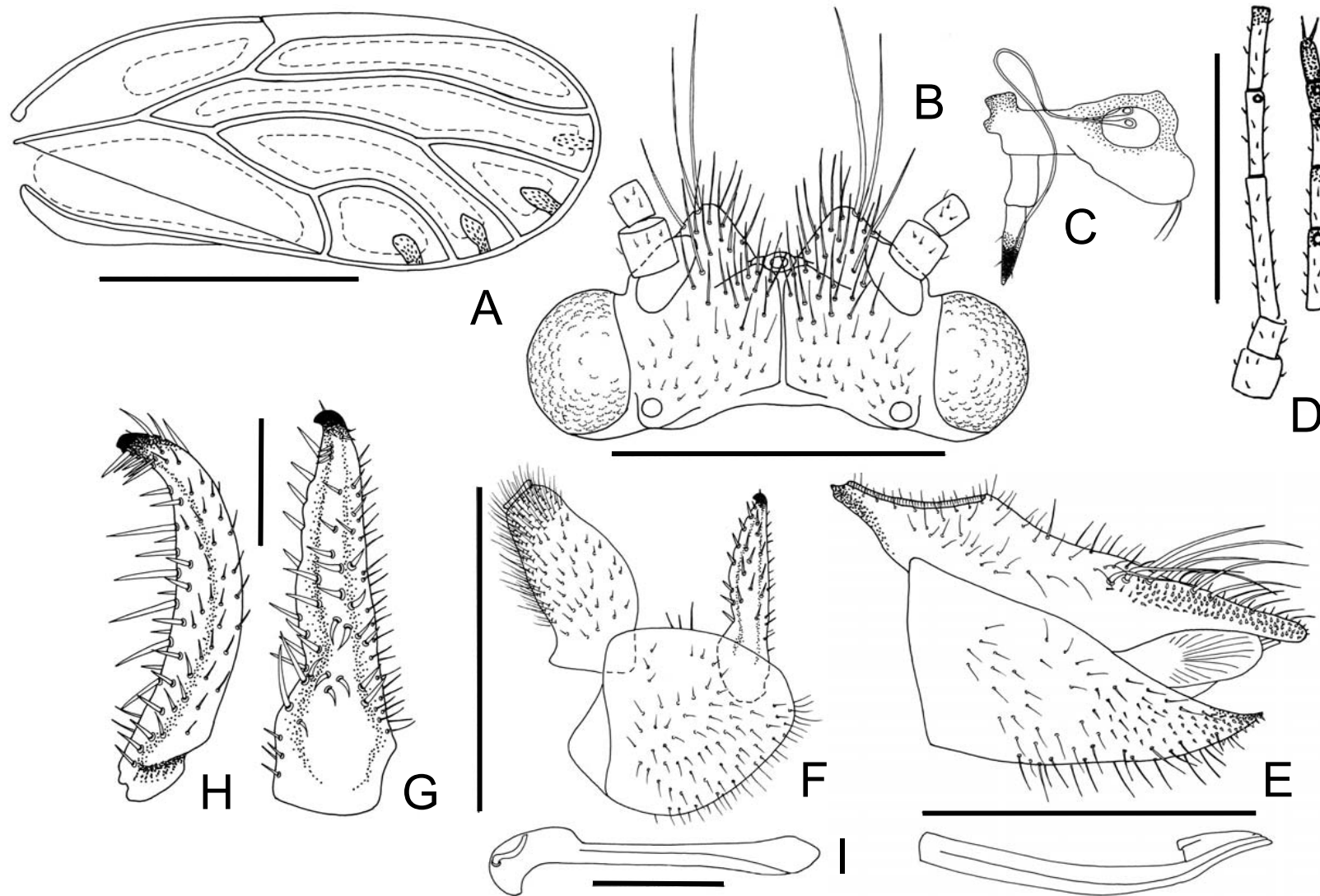


FIGURE 7. *Arytinnis romeria* sp. nov. A – forewing, B – head, C – proboscis and clypeus, D – antenna, E – Egenitalia and ovipositor, F – Γ genitalia, G – Γ paramere interior view, H – Γ paramere posterior view, I – Γ aedeagus. Scale bars: A = 1 mm, B–F = 0.5 mm, G–I = 0.1 mm.

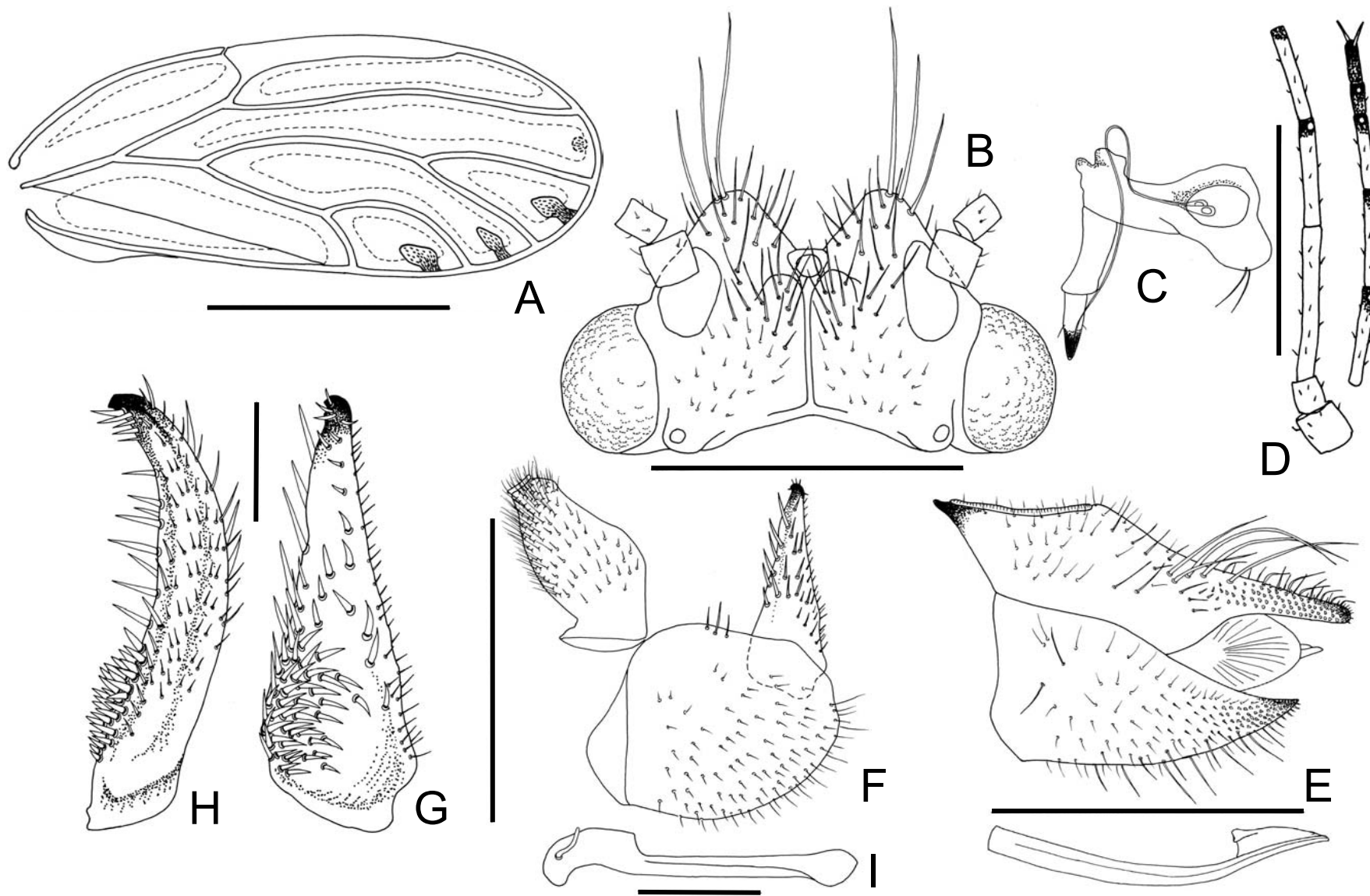


FIGURE 8. *Arytinnis fortunata* sp. nov. A – forewing, B – head, C – proboscis and clypeus, D – antenna, E – Egenitalia and ovipositor, F – Γ genitalia, G – Γ paramere interior view, H – Γ paramere posterior view, I – Γ aedeagus. Scale bars: A = 1 mm, B–F = 0.5 mm, G–I = 0.1 mm.

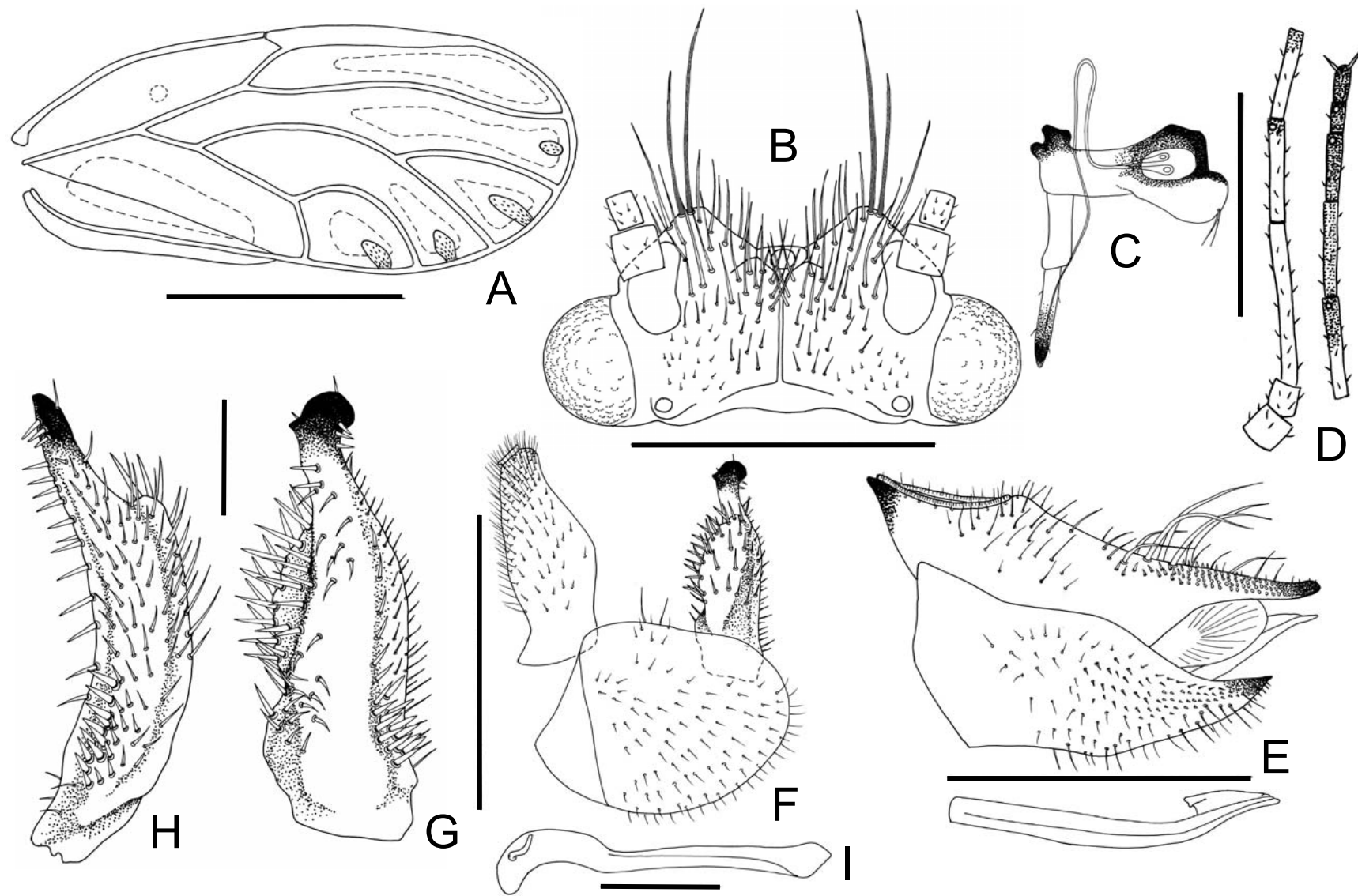


FIGURE 9. *Arytinnis canariensis* sp. nov. A – forewing, B – head, C – proboscis and clypeus, D – antenna, E – Egenitalia and ovipositor, F – Γ genitalia, G – Γ paramere interior view, H – Γ paramere posterior view, I – Γ aedeagus. Scale bars: A = 1 mm, B–F = 0.5 mm, G–I = 0.1 mm.

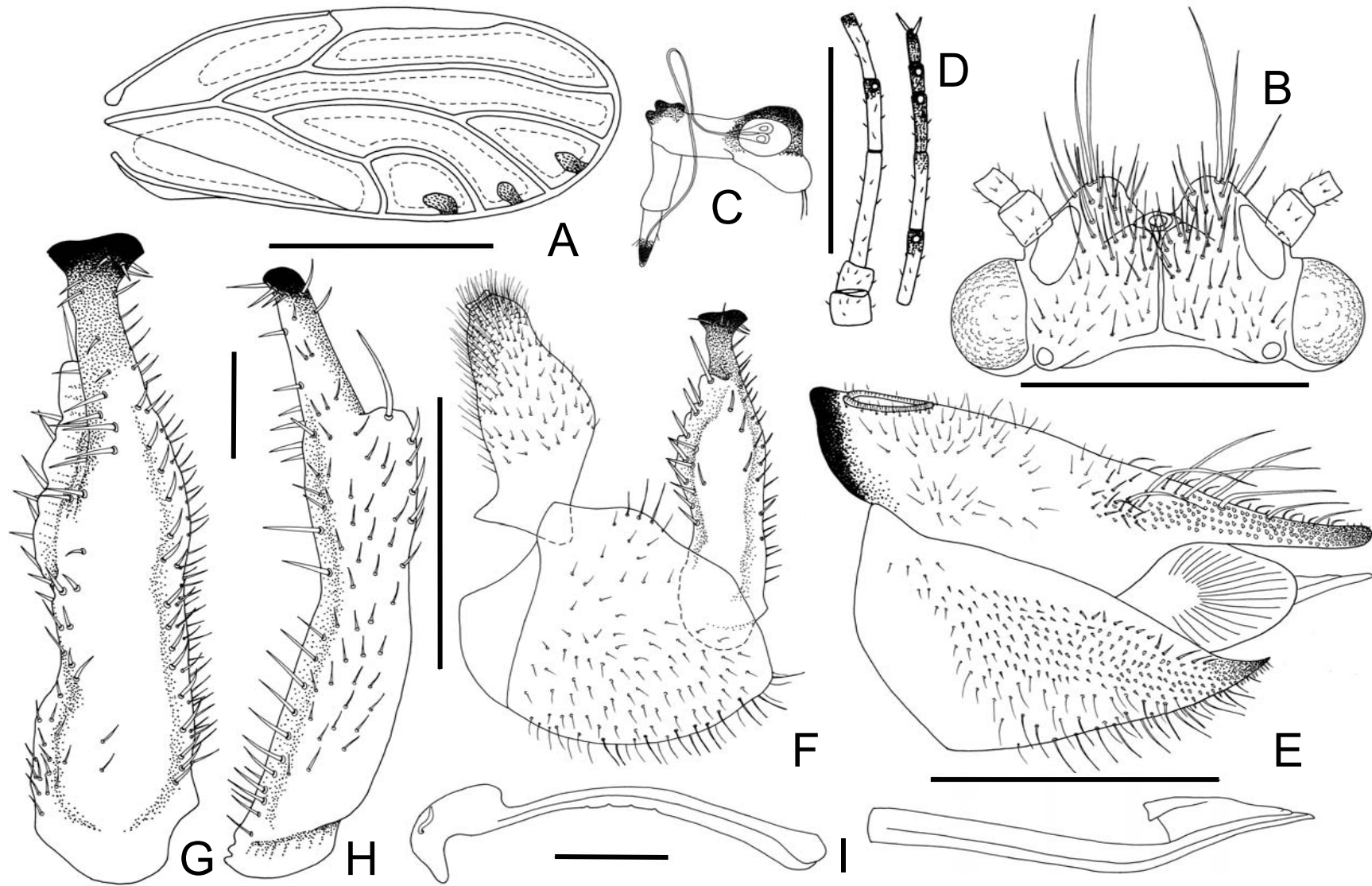


FIGURE 10. *Atytinnis menceyata* sp. nov. A – forewing, B – head, C – proboscis and clypeus, D – antenna, E – Egenitalia and ovipositor, F – Γ genitalia, G – Γ paramere interior view, H – Γ paramere posterior view, I – Γ aedeagus. Scale bars: A = 1 mm, B–F = 0.5 mm, G–I = 0.1 mm.

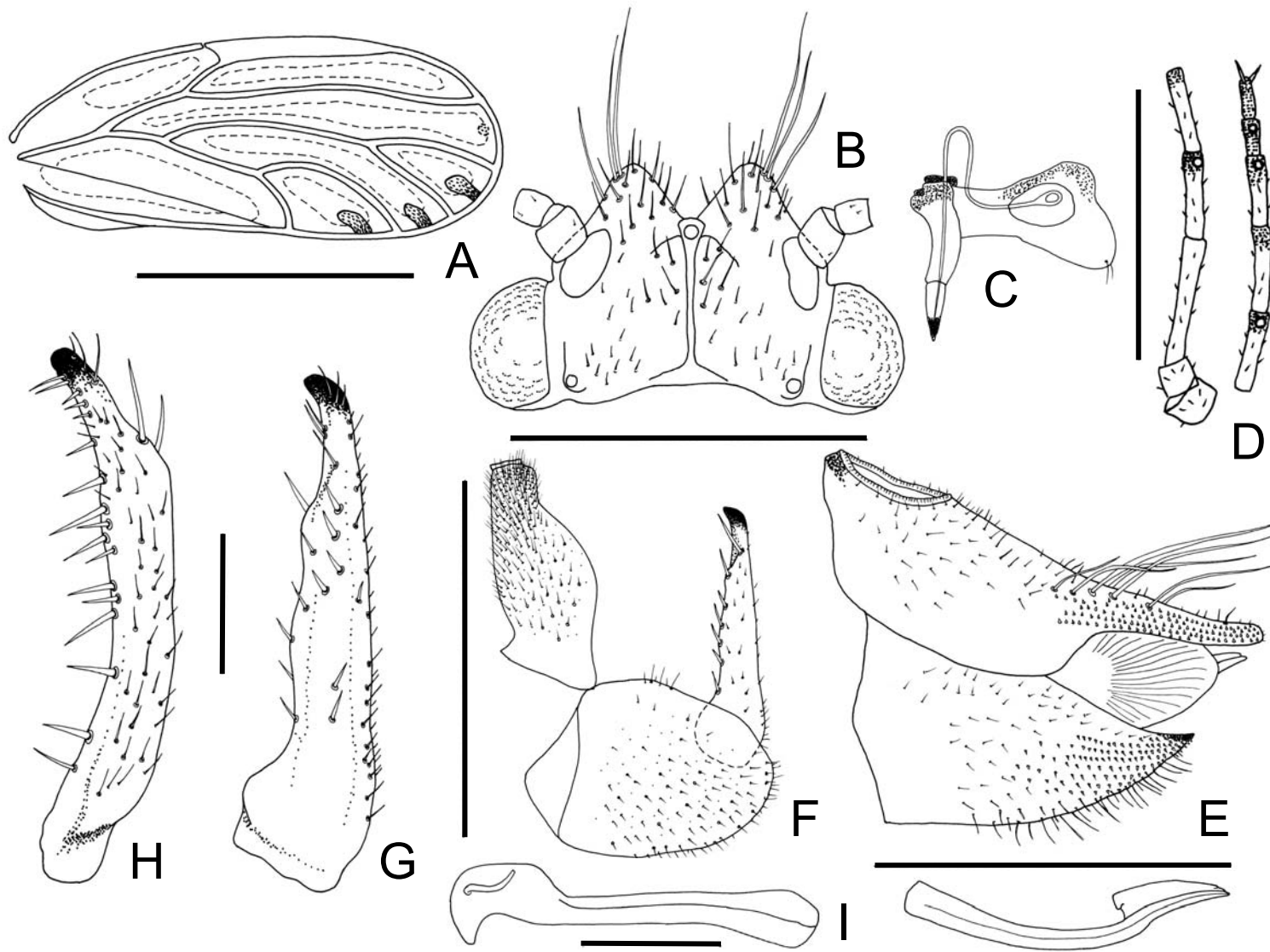


FIGURE 11. *Atytinnis ochrita* sp. nov. A – forewing, B – head, C – proboscis and clypeus, D – antenna, E – Egenitalia and ovipositor, F – Γ genitalia, G – Γ paramere interior view, H – Γ paramere posterior view, I – Γ aedeagus. Scale bars: A = 1 mm, B–F = 0.5 mm, G–I = 0.1 mm.

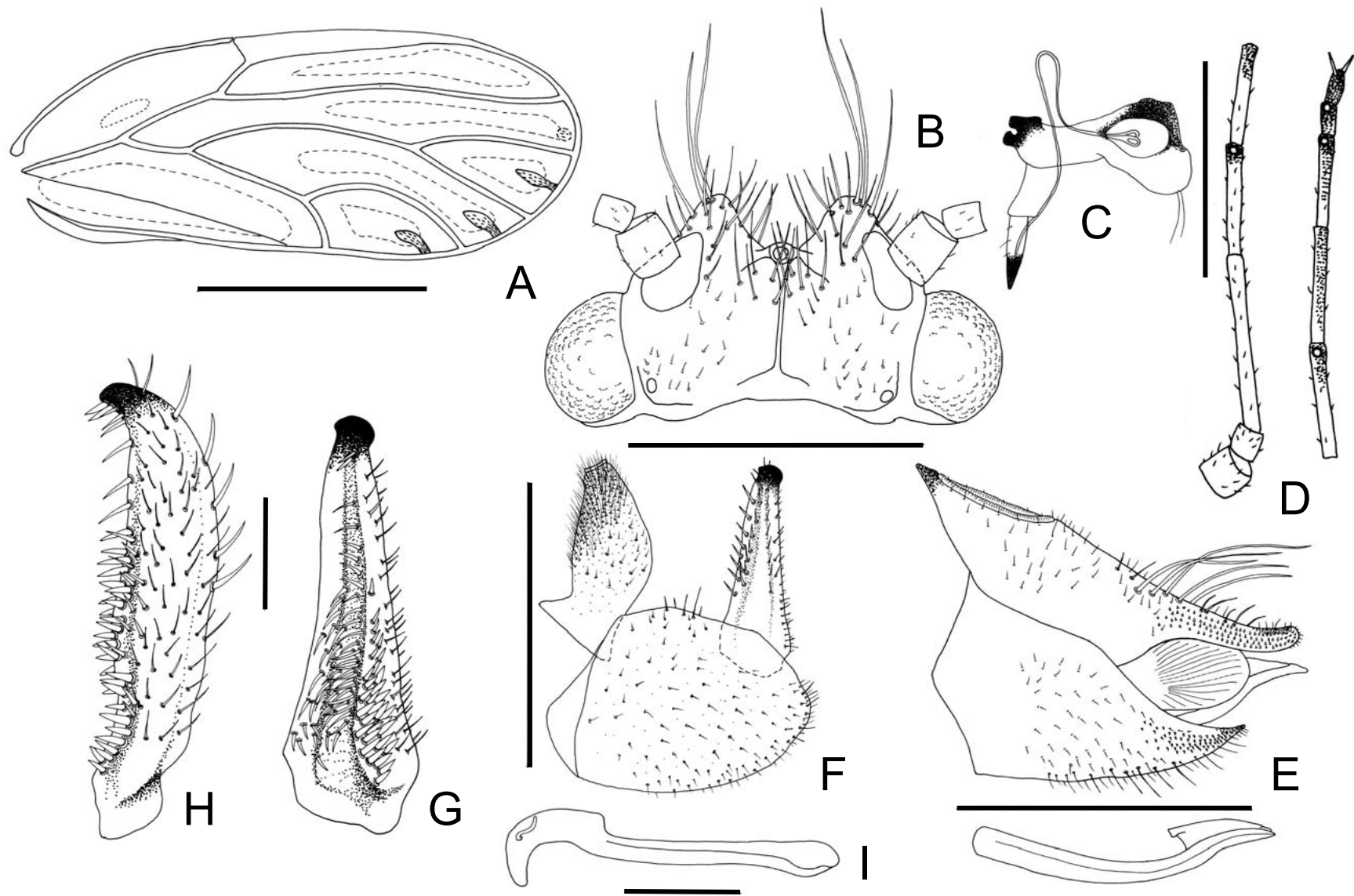


FIGURE 12. *Atytinnis occidentalis* sp. nov. A – forewing, B – head, C – proboscis and clypeus, D – antenna, E – Egenitalia and ovipositor, F – Γ genitalia, G – Γ paramere interior view, H – Γ paramere posterior view, I – Γ aedeagus. Scale bars: A = 1 mm, B–F = 0.5 mm, G–I = 0.1 mm.

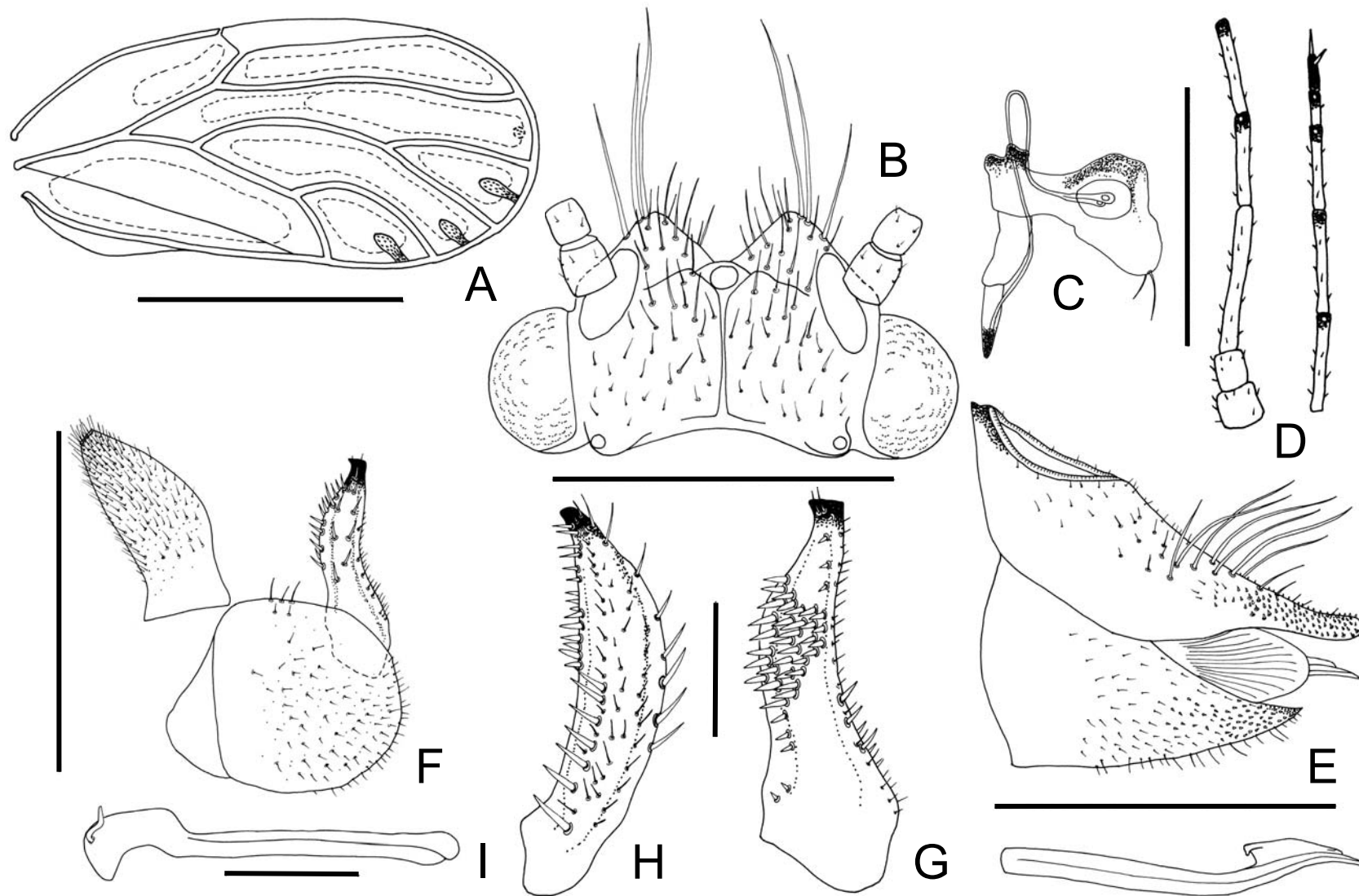


FIGURE 13. *Atytinnis gomeræ* sp. nov. A – forewing, B – head, C – proboscis and clypeus, D – antenna, E – Egenitalia and ovipositor, F – Γ genitalia, G – Γ paramere interior view, H – Γ paramere posterior view, I – Γ aedeagus. Scale bars: A = 1 mm, B–F = 0.5 mm, G–I = 0.1 mm.

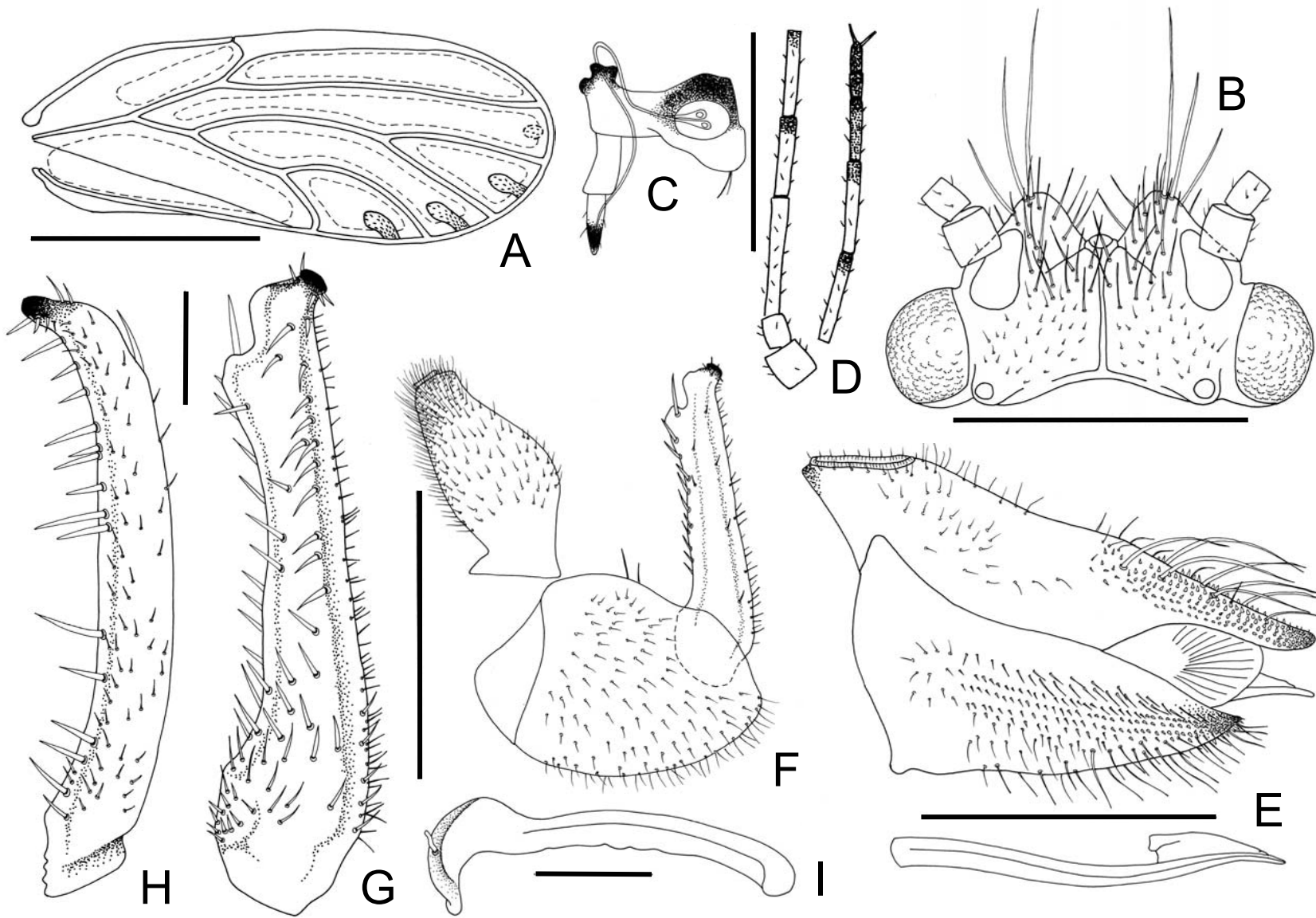


FIGURE 14. *Atytinnis hupalupa* sp. nov. A – forewing, B – head, C – proboscis and clypeus, D – antenna, E – Egenitalia and ovipositor, F – Γ genitalia, G – Γ paramere interior view, H – Γ paramere posterior view, I – Γ aedeagus. Scale bars: A = 1 mm, B–F = 0.5 mm, G–I = 0.1 mm.

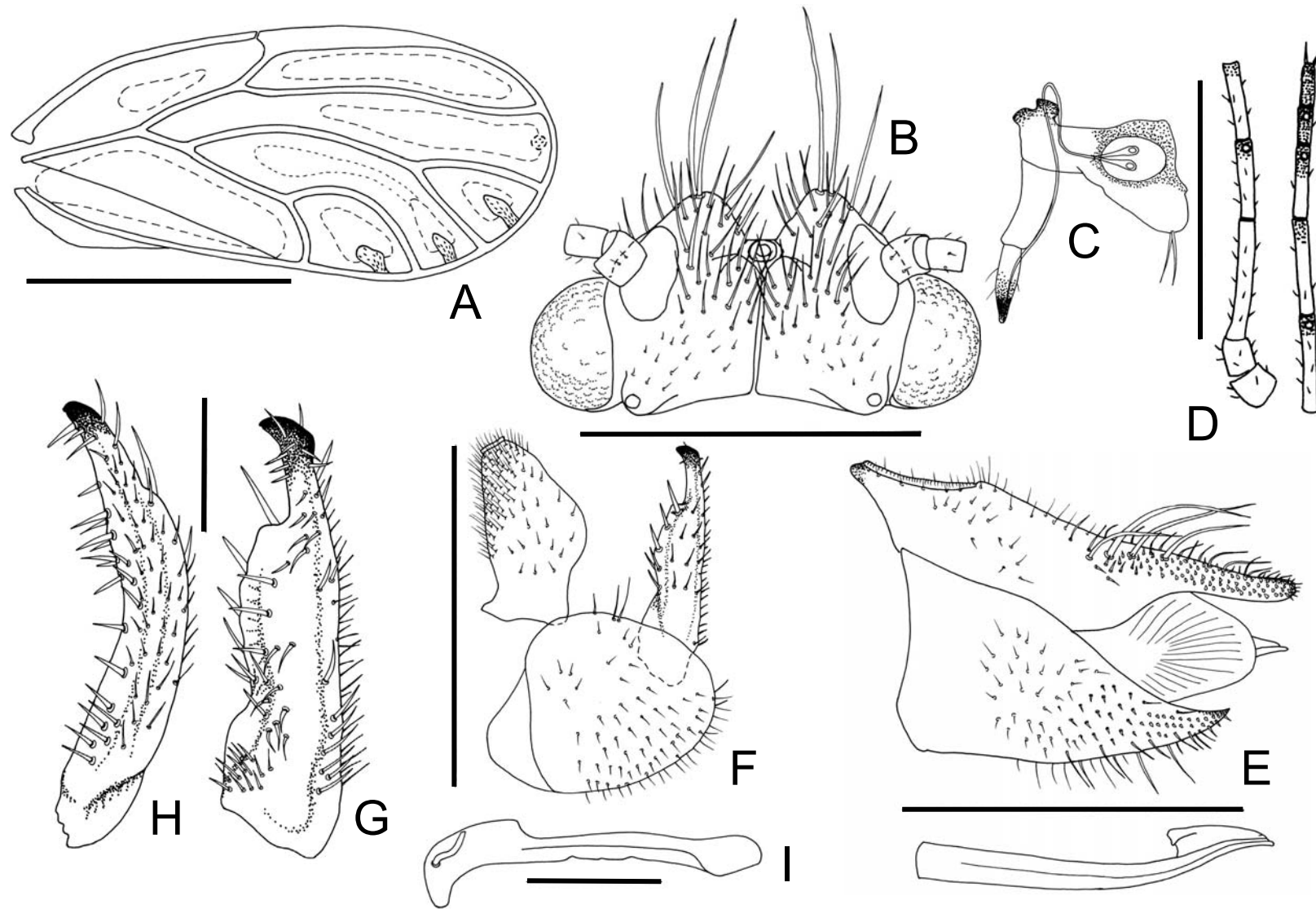


FIGURE 16. *Atytinnis berber* sp. nov. A – forewing, B – head, C – proboscis and clypeus, D – antenna, E – Egenitalia and ovipositor, F – Γ genitalia, G – Γ paramere interior view, H – Γ paramere posterior view, I – Γ aedeagus. Scale bars: A = 1 mm, B–F = 0.5 mm, G–I = 0.1 mm.

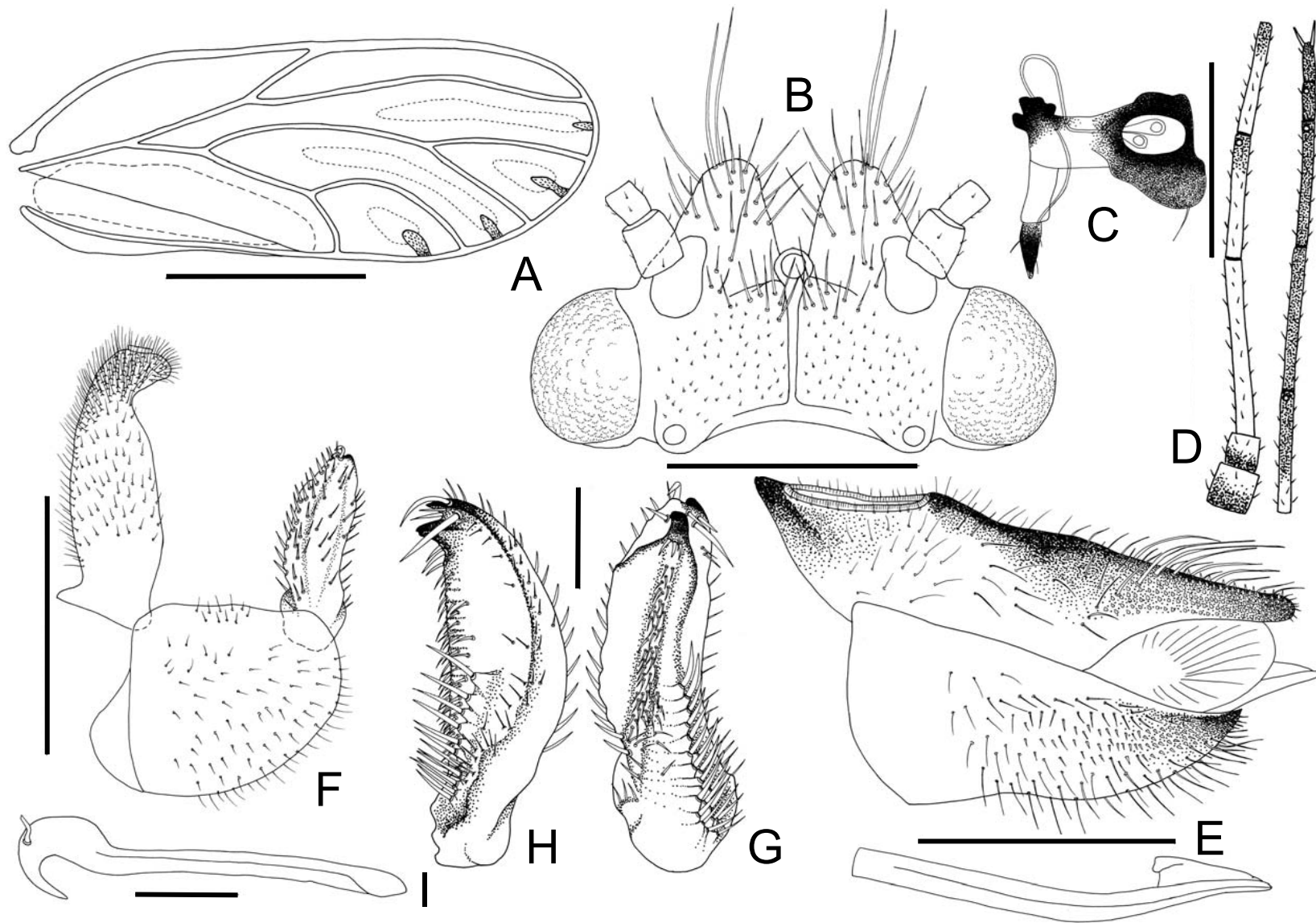


FIGURE 17. *Arytaina vittata* sp. nov. A – forewing, B – head, C – proboscis and clypeus, D – antenna, E – Egenitalia and ovipositor, F – Γ genitalia, G – Γ paramere interior view, H – Γ paramere posterior view, I – Γ aedeagus. Scale bars: A = 1 mm, B–F = 0.5 mm, G–I = 0.1 mm.

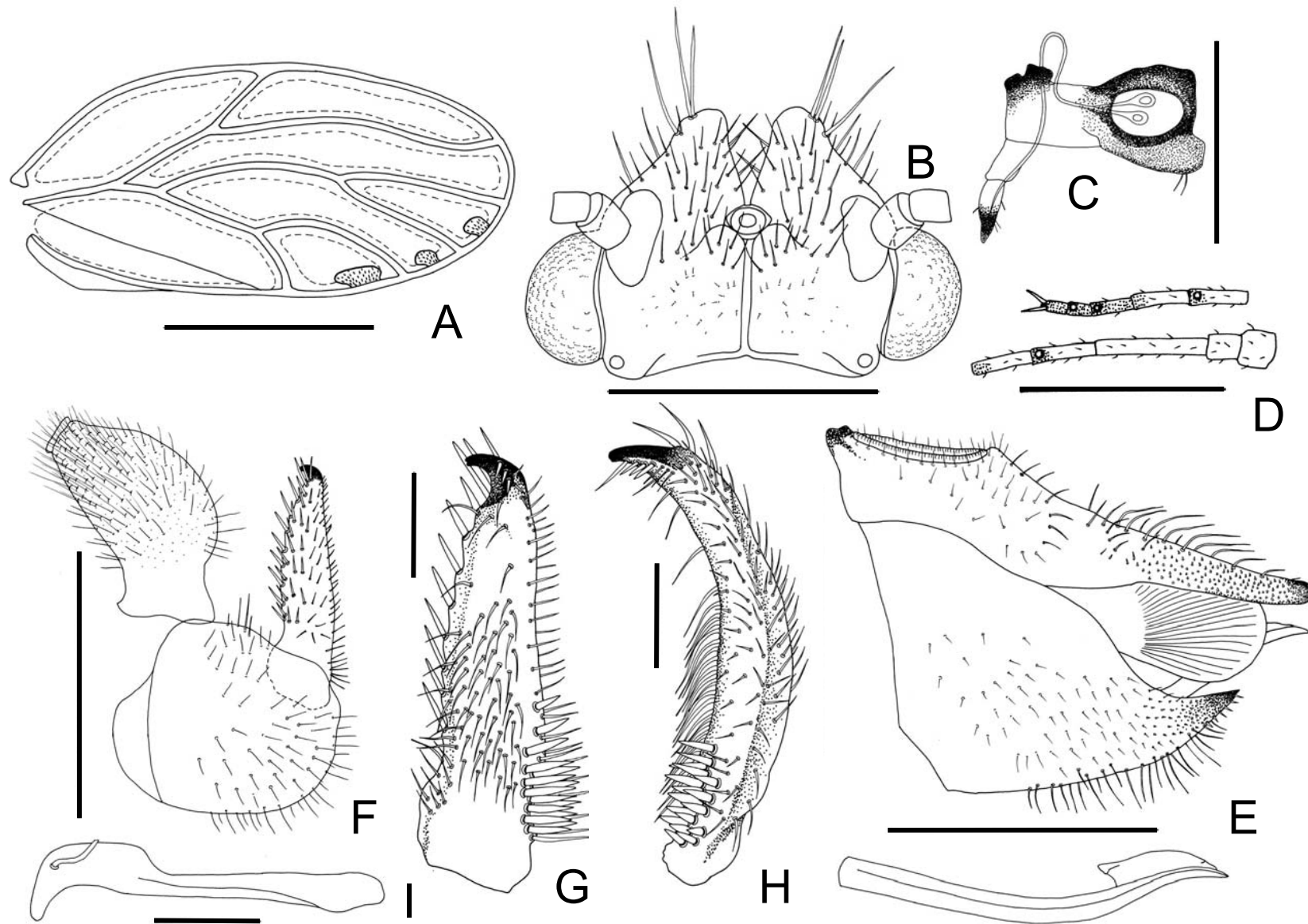


FIGURE 19. *Livilla caprifuga* sp. nov. A – forewing, B – head, C – proboscis and clypeus, D – antenna, E – Egenitalia and ovipositor, F – Γ genitalia, G – Γ paramere interior view, H – Γ paramere posterior view, I – Γ aedeagus. Scale bars: A = 1 mm, B–F = 0.5 mm, G–I = 0.1 mm.

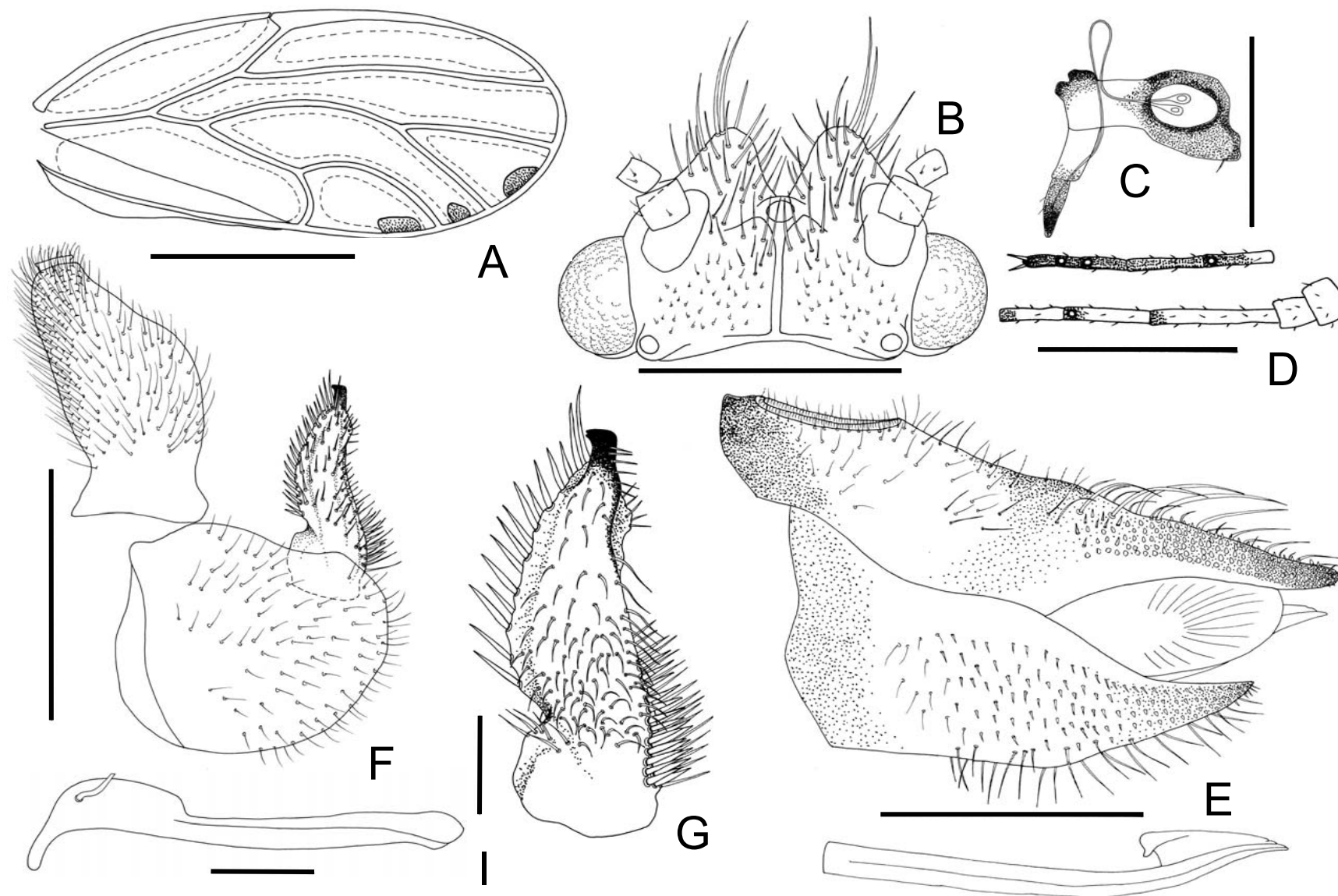


FIGURE 20. *Livilla baetica* sp. nov. A – forewing, B – head, C – proboscis and clypeus, D – antenna, E – Egenitalia and ovipositor, F – Γ genitalia, G – Γ paramere interior view, H – Γ paramere posterior view, I – Γ aedeagus. Scale bars: A = 1 mm, B–F = 0.5 mm, G–I = 0.1 mm.

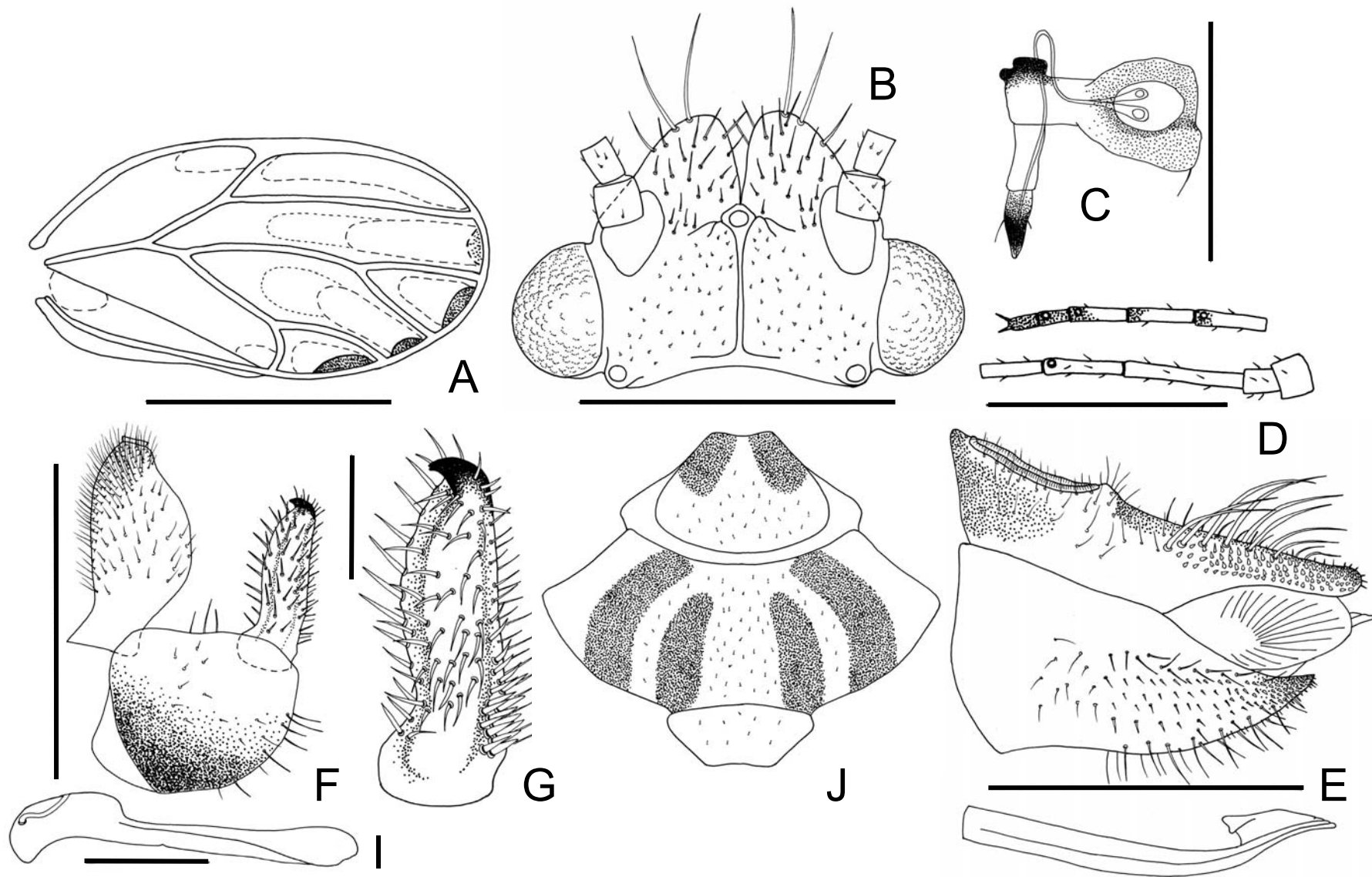


FIGURE 21. *Livilla complexa* sp. nov. A – forewing, B – head, C – proboscis and clypeus, D – antenna, E – Egenitalia and ovipositor, F – Γ genitalia, G – Γ paramere interior view, H – Γ paramere posterior view, I – Γ aedeagus, J – thoracic tergal plates.

Scale bars: A = 1 mm, B–F = 0.5 mm, G–I = 0.1 mm.